

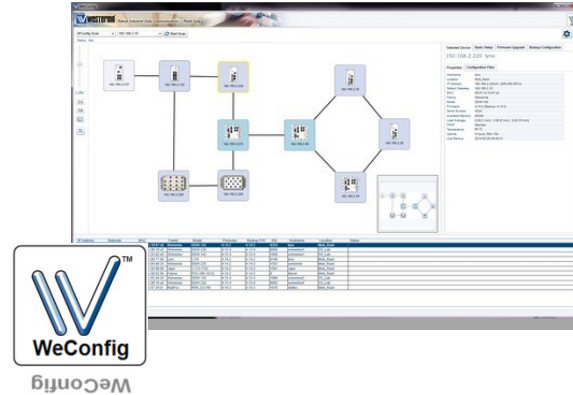


WeConfig

Robust Industrial Data Communications – Made Easy

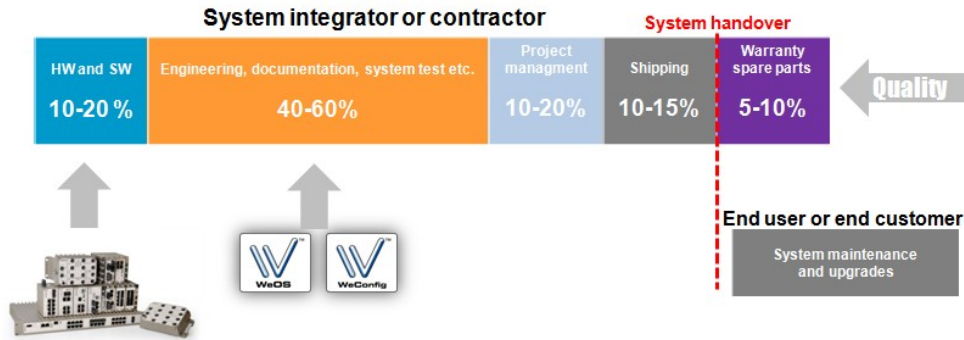
WeConfig and WeOS

- Unique WeOS features are – Made Easy deployed by WeConfig
- WeConfig add value to WeOS with additional features
 - Advanced diagnostic
 - Maintenance tool
 - Documentation and reports
 - Quality controlled global configuration
 - Cyber Security configuration tool



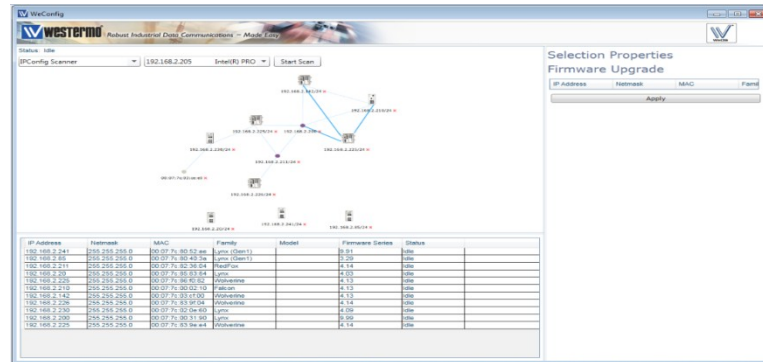
WeConfig and WeOS

- Unique WeOS features are – Made Easy deployed by WeConfig
- WeConfig add value to WeOS with additional features
- WeOS and WeConfig add value for systems integrators and end users



The evaluation of WeConfig

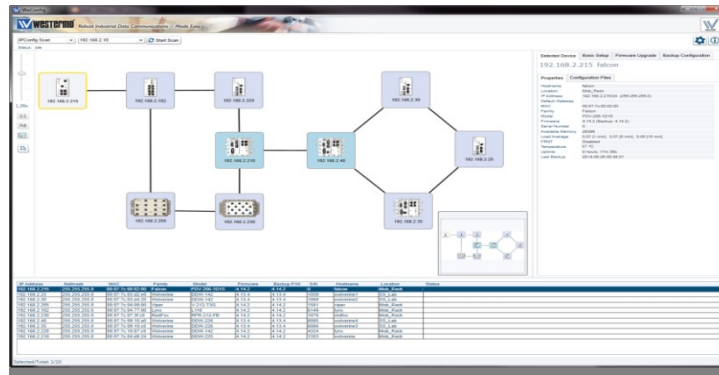
March 2014



First sketches

The evaluation of WeConfig

March 2014 → June 2014



WeConfig 1.0 & 1.1

First release

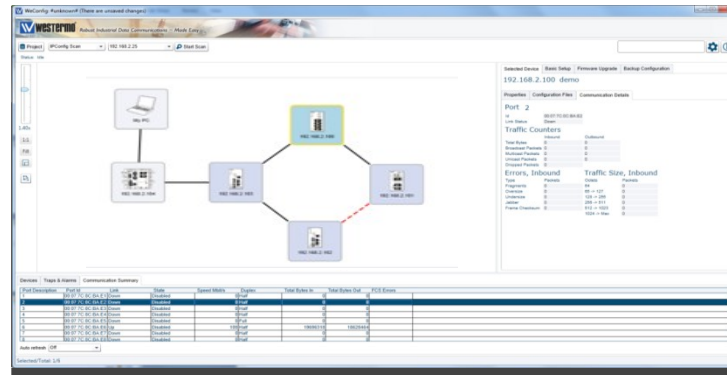
- Scan network
- Basic settings
- Topology view

The evaluation of WeConfig

March 2014

June 2014

May 2015



WeConfig 1.2

- Link alarms
- VLAN config
- FRNT config
- Global settings

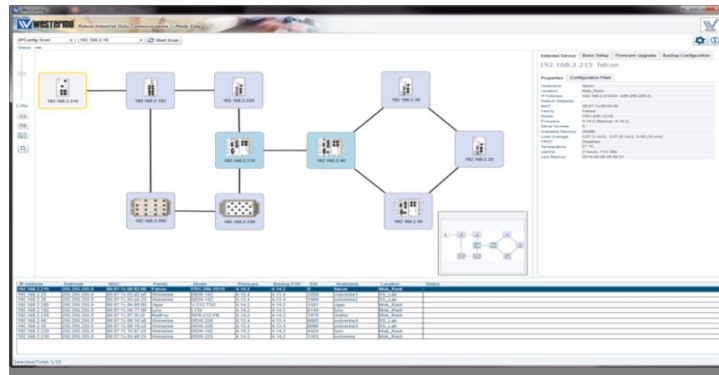
The evaluation of WeConfig

March 2014

June 2014

May 2015

Oct 2015

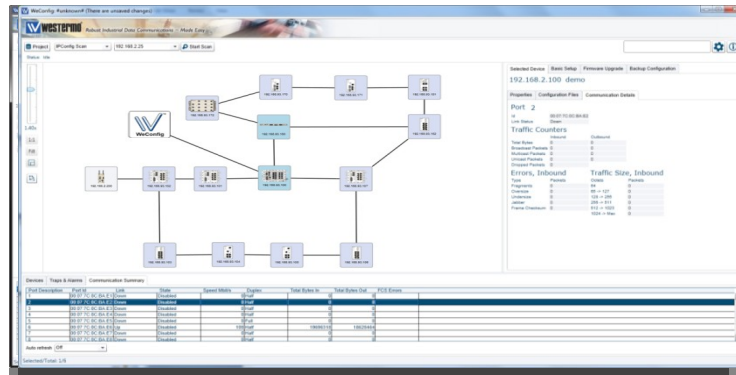


WeConfig 1.3

- Cyber security
- SHDSL support
- Alarm and events

The evaluation of WeConfig

March 2014 → June 2014 → May 2015 → Oct 2015 → June 2016



WeConfig 1.4

- Mac address learning
- Disable unused ports
- 802.1x
- Auto-compare backup

The evaluation of WeConfig

March 2014

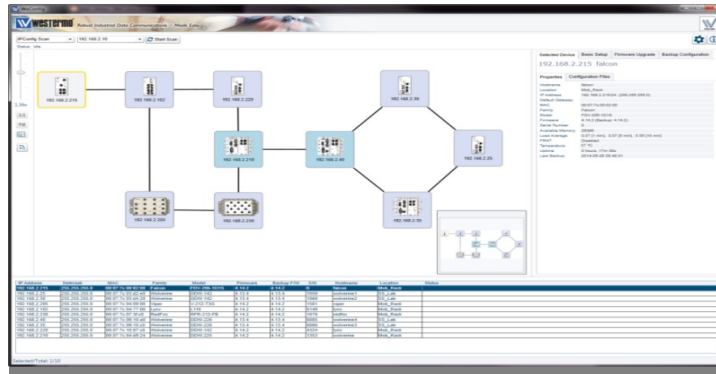
June 2014

May 2015

Oct 2015

June 2016

Oct 2016



WeConfig 1.5

- Project Gold File
- Reports
- Add unit from clipart

The evaluation of WeConfig

March 2014

June 2014

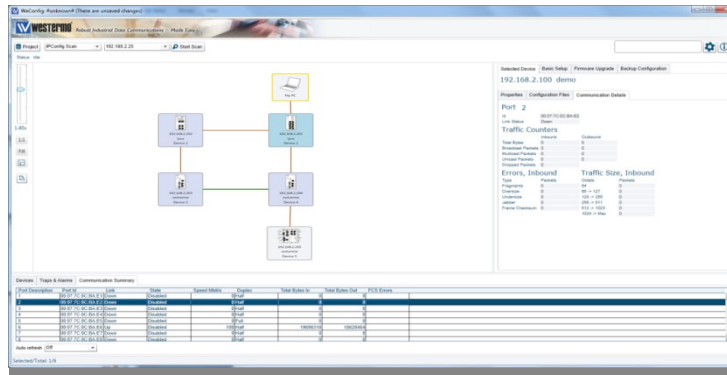
May 2015

Oct 2015

June 2016

Oct 2016

April 2017



WeConfig 1.6

- Off Line Demo

The evaluation of WeConfig

March 2014

June 2014

May 2015

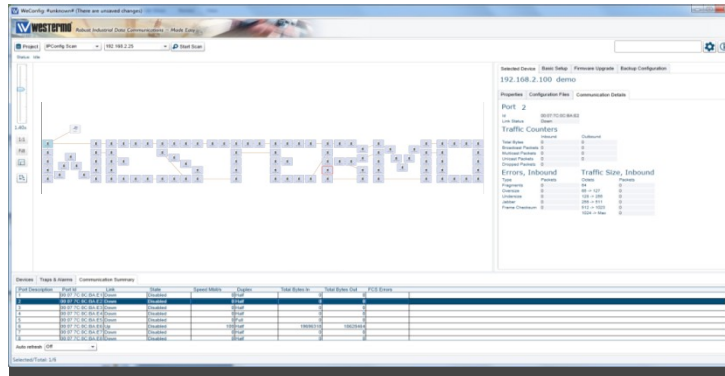
Oct 2015

June 2016

Oct 2016

April 2017

June 2017



WeConfig 1.7

- Optimised for large networks



We Config 1.8 release



Robust Industrial Data Communications – Made Easy

Added value in WeConfig 1.8

Deployment

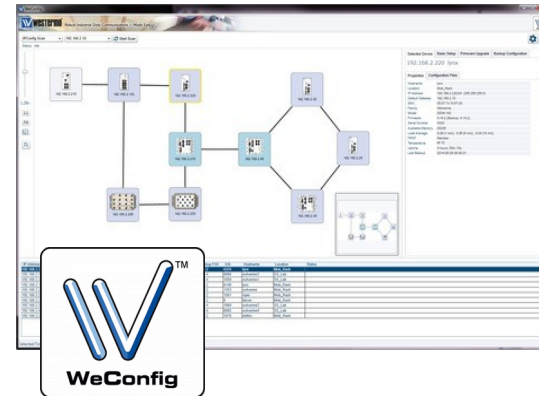
- MRP configuration and licence handling
- Advanced CLI scripting
- CIDR notation

Maintenance

- Diagnostic feature with multiple data
- Syslog server
- Layered topology
- Copy paste replacement of unit

Network and security overview

- Extended switch hardening and SNMPv3
- Security reports
- Extended MAC filter functionality



New features adding customer value

✓ Device discovery

General settings are read/write

MRP and licence management

RSTP path cost implemented

Simplified Copy/paste feature

MAC filter wildcards are more flexible.

Syslog server and export syslog to file.

CLI scripting

CIDR notation instead of netmask.

In WeConfig 1.8 we have merged the scanning protocols used in WeOS 5 and WeOS 4 to one discovery option

New features adding customer value

- ✓ Device discovery
- ✓ General settings are read/write
 - MRP and licence management
 - RSTP path cost implemented
 - Simplified Copy/paste feature
 - MAC filter wildcards are more flexible.
 - Syslog server and export syslog to file.
 - CLI scripting
 - CIDR notation instead of netmask.

The General tab now has read/write functionality and you will now be able to configure

- Syslog Servers
- Default gateway,
- Enable/disable routing and
- DNS servers
- Time/date
- Link alarm

New features adding customer value

- ✓ Device discovery
- ✓ General settings are read/write
- ✓ MRP and licence management
 - RSTP path cost implemented
 - Simplified Copy/paste feature
 - MAC filter wildcards are more flexible.
 - Syslog server and export syslog to file.
 - CLI scripting
 - CIDR notation instead of netmask.

In WeConfig you configure MRP similar to how FRNT are configured. MRP though need a licence key installed on the unit, that is also managed by WeConfig 1.8.

New features adding customer value

- ✓ Device discovery
- ✓ General settings are read/write
- ✓ MRP and licence management
- ✓ RSTP path cost implemented

Path cost is complemented configuration option on RSTP

Simplified Copy/paste feature

MAC filter wildcards are more flexible.

Syslog server and export syslog to file.

CLI scripting

CIDR notation instead of netmask.

New features adding customer value

- ✓ Device discovery
- ✓ General settings are read/write
- ✓ MRP and licence management
- ✓ RSTP path cost implemented
- ✓ Simplified Copy/paste feature

MAC filter wildcards are more flexible.

Syslog server and export syslog to file.

CLI scripting

CIDR notation instead of netmask.

We have optimised the copy paste functionality, it is now a simple copy paste functionality when a unit needs to be exchanged in a network.

New features adding customer value

- ✓ Device discovery
- ✓ General settings are read/write
- ✓ MRP and licence management
- ✓ RSTP path cost implemented
- ✓ Simplified Copy/paste feature
- ✓ MAC filter wildcards are more flexible.

Syslog server and export syslog to file.

CLI scripting

CIDR notation instead of netmask.

In WeConfig 1.8 we have improved MAC filter functionality.

- You can now scan a part of the network
- MAC wildcards simplifies configuration

New features adding customer value

- ✓ Device discovery
- ✓ General settings are read/write
- ✓ MRP and licence management
- ✓ RSTP path cost implemented
- ✓ Simplified Copy/paste feature
- ✓ MAC filter wildcards are more flexible.
- ✓ Syslog server and export syslog to file.
 - CLI scripting
 - CIDR notation instead of netmask.

New features adding customer value

- ✓ Device discovery
- ✓ General settings are read/write
- ✓ MRP and licence management
- ✓ RSTP path cost implemented
- ✓ Simplified Copy/paste feature
- ✓ MAC filter wildcards are more flexible.
- ✓ Syslog server and export syslog to file.
- ✓ CLI scripting
 - CIDR notation instead of netmask.

New features adding customer value

- ✓ Device discovery
- ✓ General settings are read/write
- ✓ MRP and licence management
- ✓ RSTP path cost implemented
- ✓ Simplified Copy/paste feature
- ✓ MAC filter wildcards are more flexible.
- ✓ Syslog server and export syslog to file.
- ✓ CLI scripting
- ✓ CIDR notation instead of netmask.

CIDR stands for Classless Inter-Domain Routing and is used for IP addressing and routing.

E.g. 192.168.2.200/24 => set the netmask to 255.255.255.0

New features adding customer value

✓ Diagnostics with more data

Switch hardening on a subset of devices.

Layer topology

Security report for devices in the network.

SNMPv3 support.

Baseline config. choose latest backup

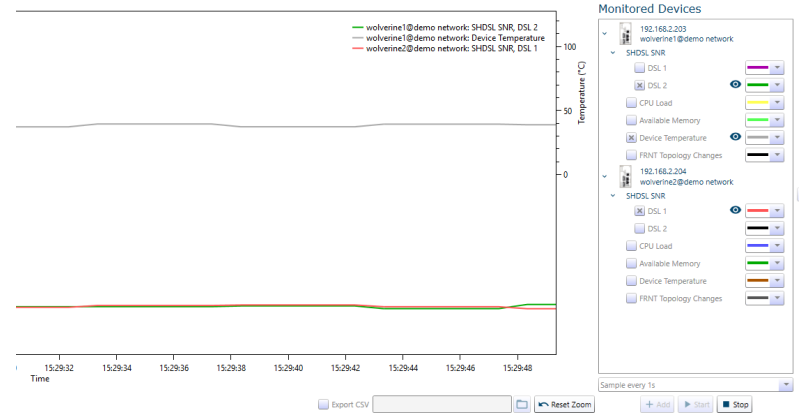
The diagnostic feature in WeConfig have been extended with a possibility to trend.

- Available memory
- CPU load
- Device temperature
- FRNT change count
- PoE Power
- RSSI
- SFP Rx/Tx Power
- SFP Port temperature
- SHDSL SNR margin

New features adding customer value

- ✓ Diagnostics with more data
 - Switch hardening on a subset of devices.
 - Layer topology
 - Security report for devices in the network.
 - SNMPv3 support.
 - Baseline config. choose latest backup

The diagnostic feature in WeConfig have been extended with a possibility to trend.



New features adding customer value

- ✓ Diagnostics with more data
- ✓ Switch hardening on a subset of devices.

Layer topology

Security report for devices in the network.

SNMPv3 support.

Baseline config. choose latest backup

Switch hardening is improved, you can now also harden a subset of switches instead of a complete network.

New features adding customer value

- ✓ Diagnostics with more data
- ✓ Switch hardening on a subset of devices.
- ✓ Layer topology
 - Security report for devices in the network.
 - SNMPv3 support.
 - Baseline config. choose latest backup

Layer topology is a new feature in WeConfig where you can group products together visualised in a logical network.

New features adding customer value

- ✓ Diagnostics with more data
- ✓ Switch hardening on a subset of devices.
- ✓ Layer topology
- ✓ Security report for devices in the network.

SNMPv3 support.

Baseline config. choose latest backup

WeConfig 1.8 have a security report that gather security related information from the network and display it in a report.

Complete Summary

Wolverine1@testrack

Hostname Wolverine1
Location testrack
Serial number 4324
Family Wolverine
Model DDW-142
MAC 00:07:7C:10:87:C0
Firmware 4.23.x
Default password Yes



Ports

DSL 1	Enabled	DSL 2	Enabled	1	Enabled
VLANs	U: 1	VLANs	U: 1	VLANs	U: 1
VLANs	2				
VLANs	U: 1				

VLAN

VID 1
Interface address 198.18.2.12/24
Services http, https, ipconfig, snmp, ssh
Tagged ports <none>
Untagged ports DSL 1, DSL 2, 1, 2
MAC filter <none>
802.1x <none>
Port access excl. <none>

Installed Certificates

Label web-default
Subject OU=TEMPORARY, CN=REPLACE
Valid from 2017-09-01 20:41:17
Valid to 2042-08-31 20:41:17

SNMP v2

Read comm. public
Write comm. <not set>
Trap comm. trap
Trap hosts 198.18.2.254

SNMP v3 Users

AAA
Login method <none>

Firewall

Not supported.

Firewall

```
==== NAT Rules =====
target  prot in  out  source  destination
MASQUERADE all any vlan1006 anywhere anywhere

==== Port Forwarding Rules =====
target  prot in  out  source  destination

==== Input Packet Filter Rules =====
Input Policy DROP
target  prot in  out  source  destination
ACCEPT all any any anywhere anywhere state RELATED,EST
ACCEPT all !o any anywhere localhost
ACCEPT icmp vlan1 any anywhere anywhere
DROP udp vlan1006 any anywhere anywhere udp dpt:domain
DROP tcp vlan1006 any anywhere anywhere top dpt:domain
ACCEPT udp any any anywhere anywhere udp dpt:bootps
ACCEPT tcp any any anywhere anywhere top dpt:domain
ACCEPT udp any any anywhere anywhere udp dpt:bootps
ACCEPT udp !o any anywhere anywhere udp dpt:bootpc
ACCEPT udp any any anywhere anywhere udp dpt:ntp
ACCEPT tcp vlan1 any anywhere anywhere multiport dports
ACCEPT udp vlan1 any anywhere anywhere multiport dports

==== Modifier Rules =====
target  prot in  out  source  destination

==== Forwarding Packet Filter Rules =====
Forwarding Policy DROP
target  prot in  out  source  destination
ACCEPT all any any anywhere anywhere state RELATED,EST
ACCEPT all any vlan1006 anywhere anywhere

==== Application Level Gateway (NAT) Helper Modules =====
```

New features adding customer value

- ✓ Diagnostics with more data
- ✓ Switch hardening on a subset of devices.
- ✓ Layer topology
- ✓ Security report for devices in the network.
- ✓ SNMPv3 support.

Baseline config. choose latest backup

Support for SNMPv3 is implemented in WeConfig, this is a feature valuable for Cyber Security.

New features adding customer value

- ✓ Diagnostics with more data
- ✓ Switch hardening on a subset of devices.
- ✓ Layer topology
- ✓ Security report for devices in the network.
- ✓ SNMPv3 support.
- ✓ Baseline config. choose latest backup

Baseline configuration now always choose the latest backup as a template.